



## 'HOME ON THE RANGE' BILLINGS, MONTANA

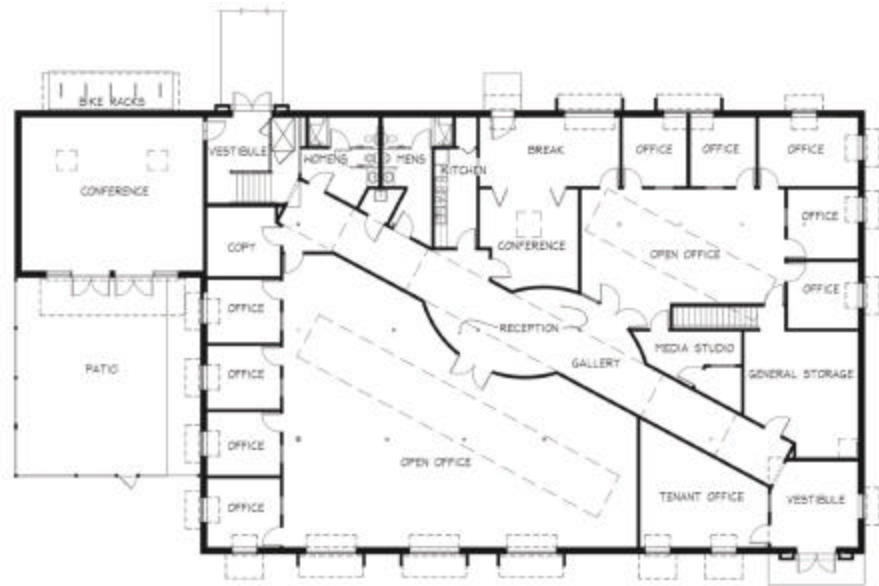
---

'Home on the Range' reinvents a 8,500 SF windowless 1940 concrete block grocery store in Billings' Southside neighborhood into a professional office building that demonstrates sustainable technologies for the Northern Plains Resource Council and the Western Organization of Resource Councils. Green building strategies include: a well-insulated shell; extensive daylighting through new clerestory monitors and light shelves at new perimeter windows; energy-efficient radiant floor heating and evaporative cooling; abundant use of salvaged, recycled-content, locally available, and low-VOC materials; construction and demolition waste diversion exceeding 90%; 10kW photovoltaic system and solar hot water panel; composting toilets; permeable pavement (first permitted use in Billings); and drought-tolerant native landscaping. The building uses only 21% as much energy as comparable new office building meeting the model energy code. The project has received LEED Platinum certification from the US Green Building Council.

Reference Contact:

Teresa Erickson  
Northern Plains Resource Council  
(406) 248-1154  
220 South 27th Street  
Billings, MT 59101





FIRST FLOOR PLAN

